

SHL Rabies Algorithms

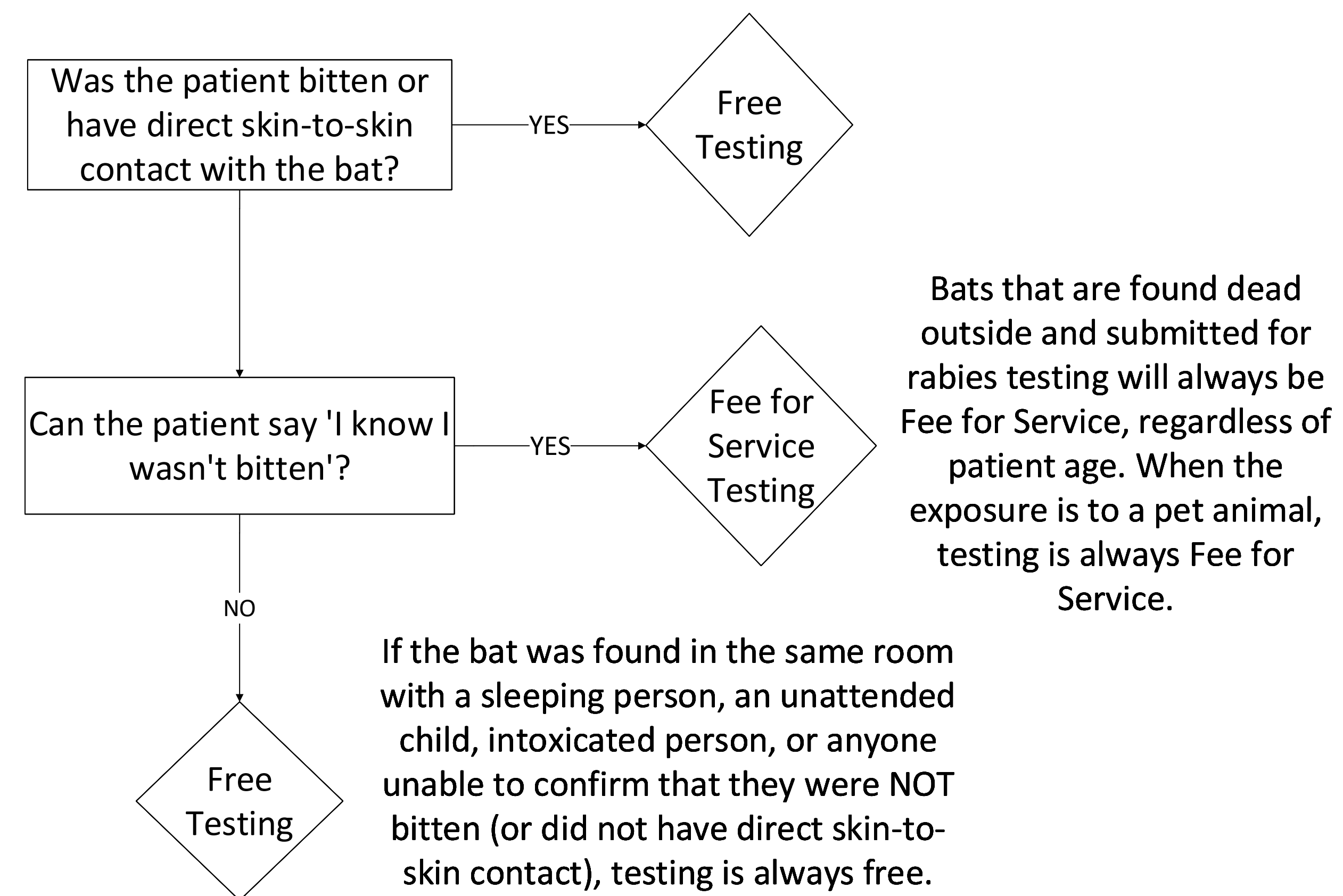
RABIES EXPOSURE SCENARIOS

- There was a bite from an animal to a human
- There was saliva or neural tissue contact from an animal to a human's open cut or mucous membrane
- A bat is found in the same room with a sleeping person, an unattended child, an intoxicated person, or anyone unable to confirm that they were NOT bitten
- Scratch that breaks the skin from a skunk, racoon, fox, or coyote

NON-EXPOSURE SCENARIOS

- Contact with blood, urine, skunk spray, or feces

SHL Bat Testing Algorithm



SHL Other Animal Testing Algorithm

